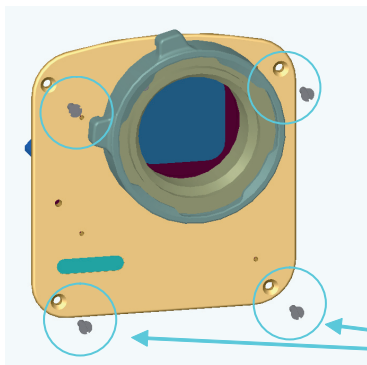


Mini35: Fine Adjustment of the Image Position

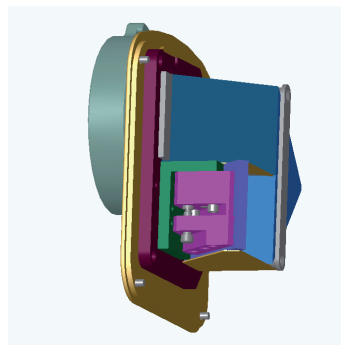
Our Image Converters are adjusted with a special tool and will fit in 95% of all cases exactly with Camcorder. Any how in certain occasions the alignment of the image position can be off due to the variables of the Camcorder. Please check first carefully the mounting of the Camcorder onto the image converter, before starting the adjustment procedure. It might not be necessary to do this fine adjustment.

In case you still need to do it, here is described how to fine adjust the Image position:

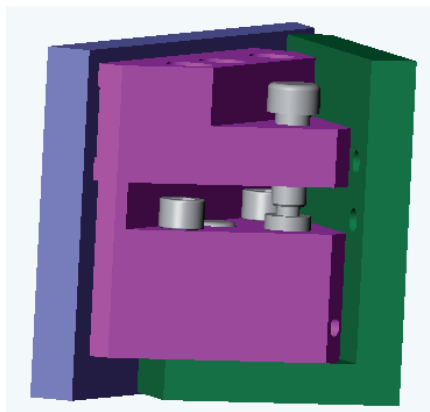
This adjustment should only be done by a trained person. P+S Technik does not take guarantee on any damages inside the image converter after this work has been done.



Remove 4x countersunk screws and carefully the back cover plate pull off.



The back cover plate carries the prism block
This section would need
Vertical adjustment - and -
Horizontal adjustment.



Locking screws need to be loosened slightly
and after adjustment need to be tightened,
again. Check prism block for dusk before
closing the cover plate.